



BUILT FOR IT.™



Cat ET Overview — Updated 2018



ET

- What is Cat ET
- Demo



BUILT FOR IT.



CAT

What Is Cat ET?

- Cat ET is a software based service tool which gives the service technician the capability to communicate and work with the electronic controls on Caterpillar products
- Connects to the Product's Data Link(s)
- Functions
 - Display Status Parameters
 - View Active Diagnostic Codes
 - View and Clear Logged Diagnostic Codes
 - Manipulate ECM Configuration
 - Record Machine Information over a period of time
 - Diagnostic Tests and Calibrations
 - Retrieve Machine Totals

BUILT FOR IT.



Cat ET

- Cat ET releases three times a year
 - February, June, October
- Cat ET may have additional releases as needed



BUILT FOR IT.



Required Hardware

538-5051 - Communications Adapter 3 Group

478-0235 Communication Adapter

370-4617 USB Cable

457-6114 Data Link Cable



BUILT FOR IT.



CAT

Communications Adapter 3

- Three Data Links: ATA (J1708), Cat Data Link (CDL), J1939 (CAN)
- Up to 4 times faster flash with J1939
- Flash memory
- Requires Comm Adapter Tool Kit to flash adapter (included with Communication Adapter 3)

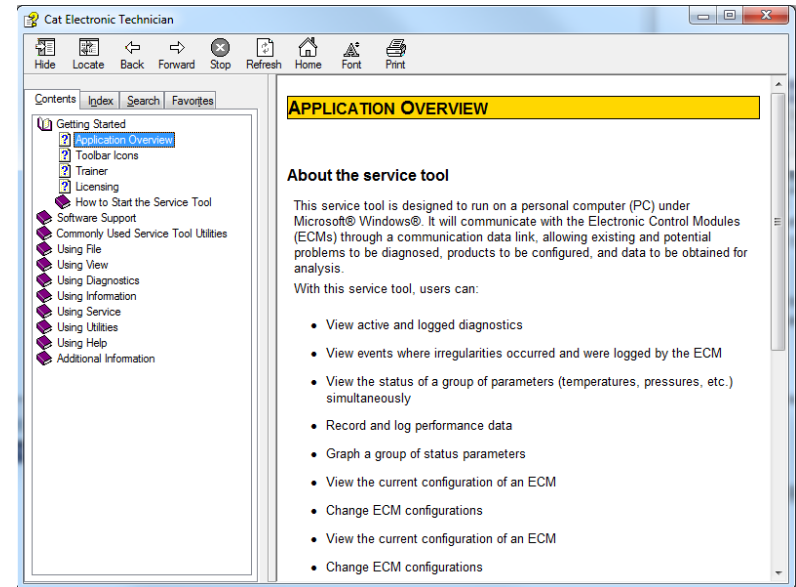
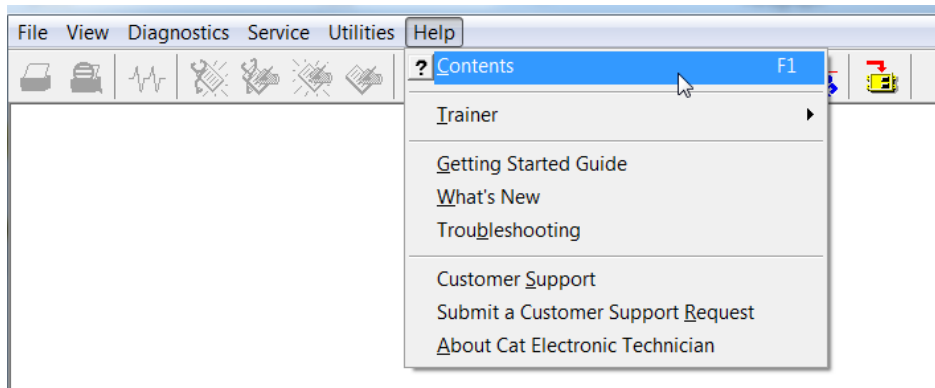


BUILT FOR IT.



Cat ET Help Manual

- Software manual is contained within help menu of Cat ET
- Paper copy of manual is not available



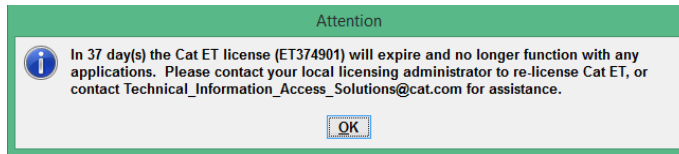
BUILT FOR IT.



CAT

Customer Cat ET

- Cat ET can be downloaded or installed from a CD
- Licensing activates customer Cat ET for 365 days and alerts the user when their license is about to expire



- Customer Cat ET cannot:
 - Clear Events that require Factory Passwords
 - Turn On/Off Options activated by Factory Passwords
 - Generate Factory Passwords
 - Flash ECM's



BUILT FOR IT.



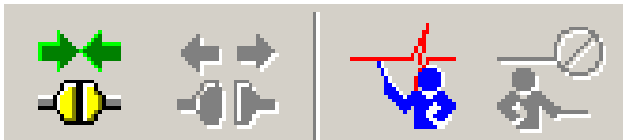
CAT

Cat ET Trainer

- Allows user to navigate and learn Cat ET without license
- 18 Training Choices



- Trainer is started with icons from the toolbar listed below



BUILT FOR IT.



CAT

Status Screen

- Status screen allows the viewing of real time parameters by either using a predefined group or creating a custom group

Cat Electronic Technician 2015A v1.0 - Status - Trainer Active

File View Diagnostics Information Service Utilities Help

Description	Value	Unit	Min	Max	ECM
General Data					
Engine Speed	800	rpm	800	800	C9 D6T (THX00001)
Desired Engine Speed	800	rpm	800	800	C9 D6T (THX00001)
Delivered Fuel Volume	21.000	mm3	21.000	21.000	C9 D6T (THX00001)
Decelerator Position	0	%	0	0	C9 D6T (THX00001)
Fuel Position	50.0		50.0	50.0	C9 D6T (THX00001)
Boost Pressure	1	psi	1	1	C9 D6T (THX00001)
Engine Oil Pressure (absolute)	46	psi	46	46	C9 D6T (THX00001)
Engine Load Factor	1	%	1	1	C9 D6T (THX00001)
Engine Power Derate	0	%	0	0	C9 D6T (THX00001)
Fuel Rate Based Percent Engine Load Factor	6.9	%	6.9	6.9	C9 D6T (THX00001)

Groups... Full Screen Zoom In Hold Trigger Snapshot

Active Codes [4] Active Events [3] Status Flags [0]

General Data C9 D6T (THX00001)

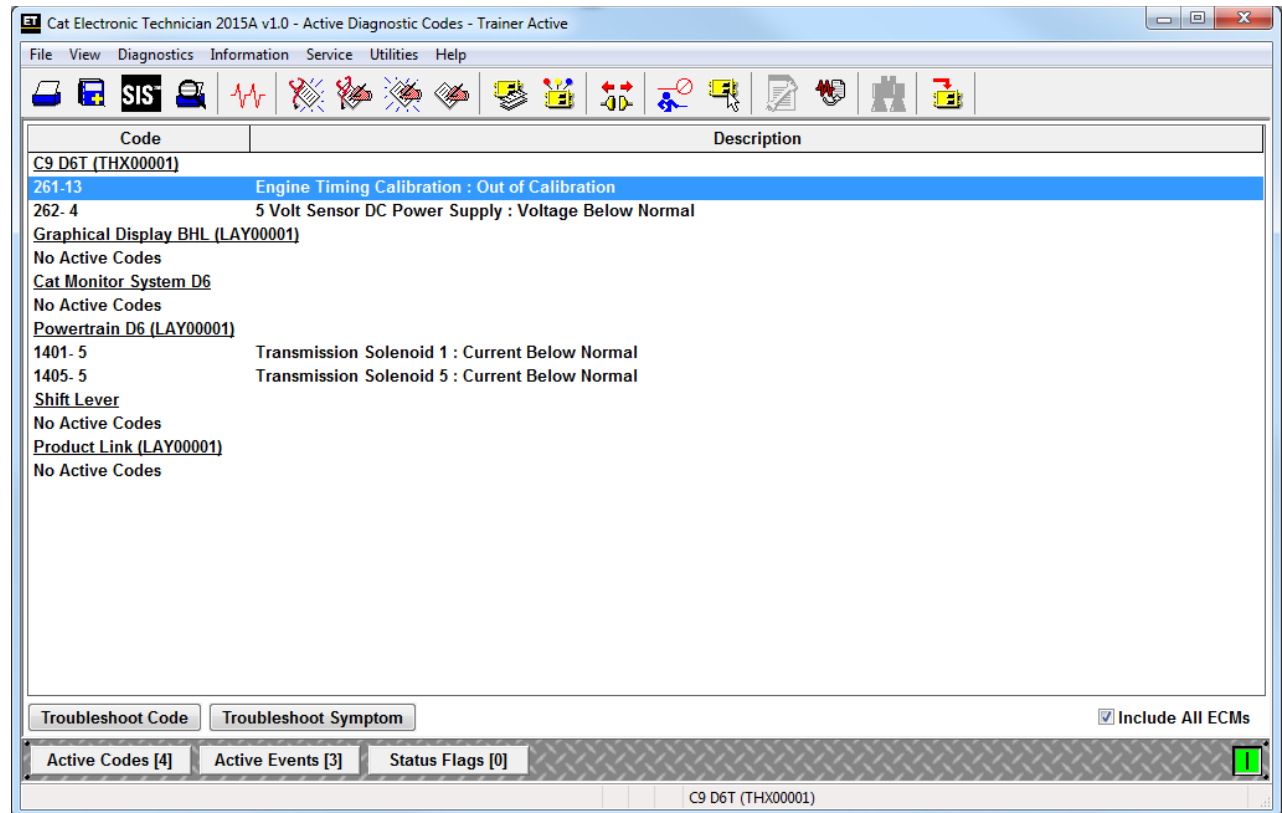
BUILT FOR IT.



CAT

Active Diagnostic Codes

- The Active Diagnostic Codes function provides information to warn the vehicle operator of potential problems, and indicates the nature of the problem to the service technician
- The codes that are displayed on this screen are active (occurring as you view them)



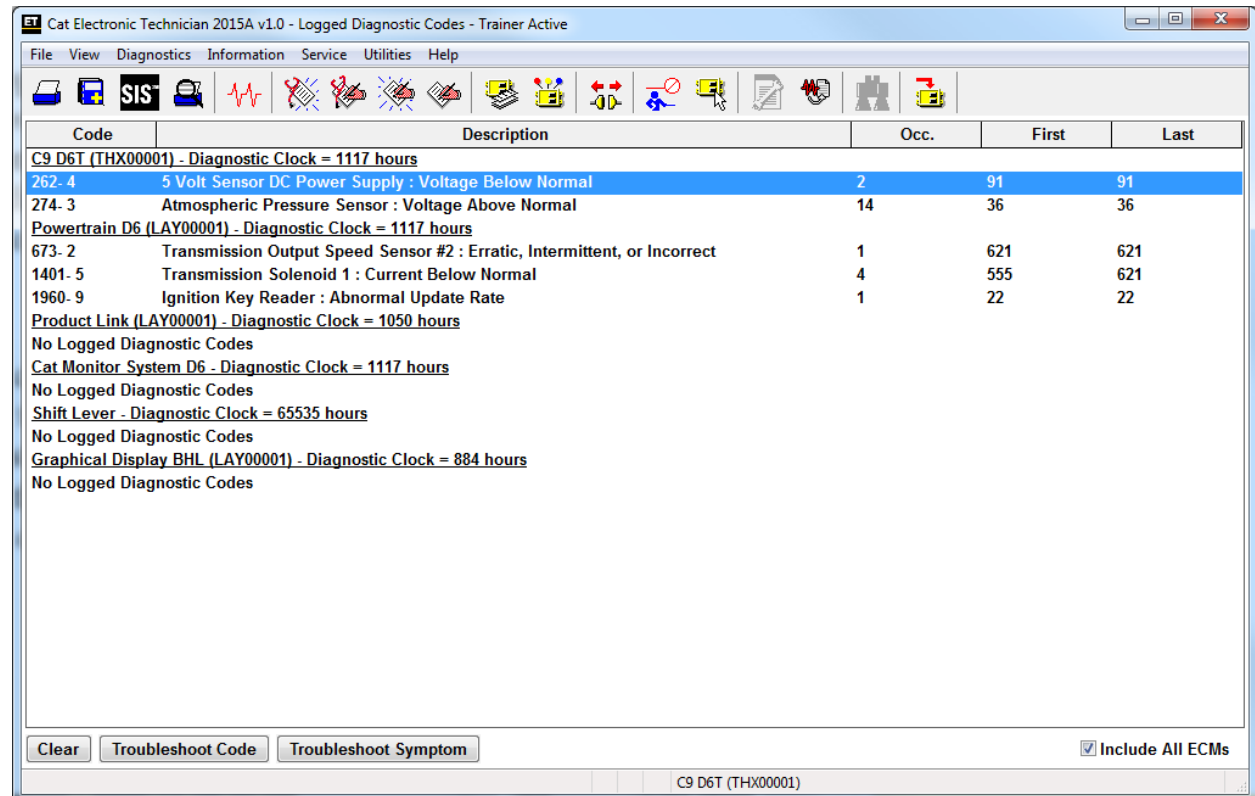
BUILT FOR IT.



CAT

Logged Diagnostic Codes

- The Logged Diagnostic Codes function provides a list of diagnostic codes logged by the ECM
- These codes are similar to the active diagnostic codes except that they are logged over time



Cat Electronic Technician 2015A v1.0 - Logged Diagnostic Codes - Trainer Active

Code	Description	Occ.	First	Last
<u>C9 D6T (THX00001) - Diagnostic Clock = 1117 hours</u>				
262- 4	5 Volt Sensor DC Power Supply : Voltage Below Normal	2	91	91
274- 3	Atmospheric Pressure Sensor : Voltage Above Normal	14	36	36
<u>Powertrain D6 (LAY00001) - Diagnostic Clock = 1117 hours</u>				
673- 2	Transmission Output Speed Sensor #2 : Erratic, Intermittent, or Incorrect	1	621	621
1401- 5	Transmission Solenoid 1 : Current Below Normal	4	555	621
1960- 9	Ignition Key Reader : Abnormal Update Rate	1	22	22
<u>Product Link (LAY00001) - Diagnostic Clock = 1050 hours</u>				
No Logged Diagnostic Codes				
<u>Cat Monitor System D6 - Diagnostic Clock = 1117 hours</u>				
No Logged Diagnostic Codes				
<u>Shift Lever - Diagnostic Clock = 65535 hours</u>				
No Logged Diagnostic Codes				
<u>Graphical Display BHL (LAY00001) - Diagnostic Clock = 884 hours</u>				
No Logged Diagnostic Codes				

Clear Troubleshoot Code Troubleshoot Symptom ☒ Include All ECMs

C9 D6T (THX00001)

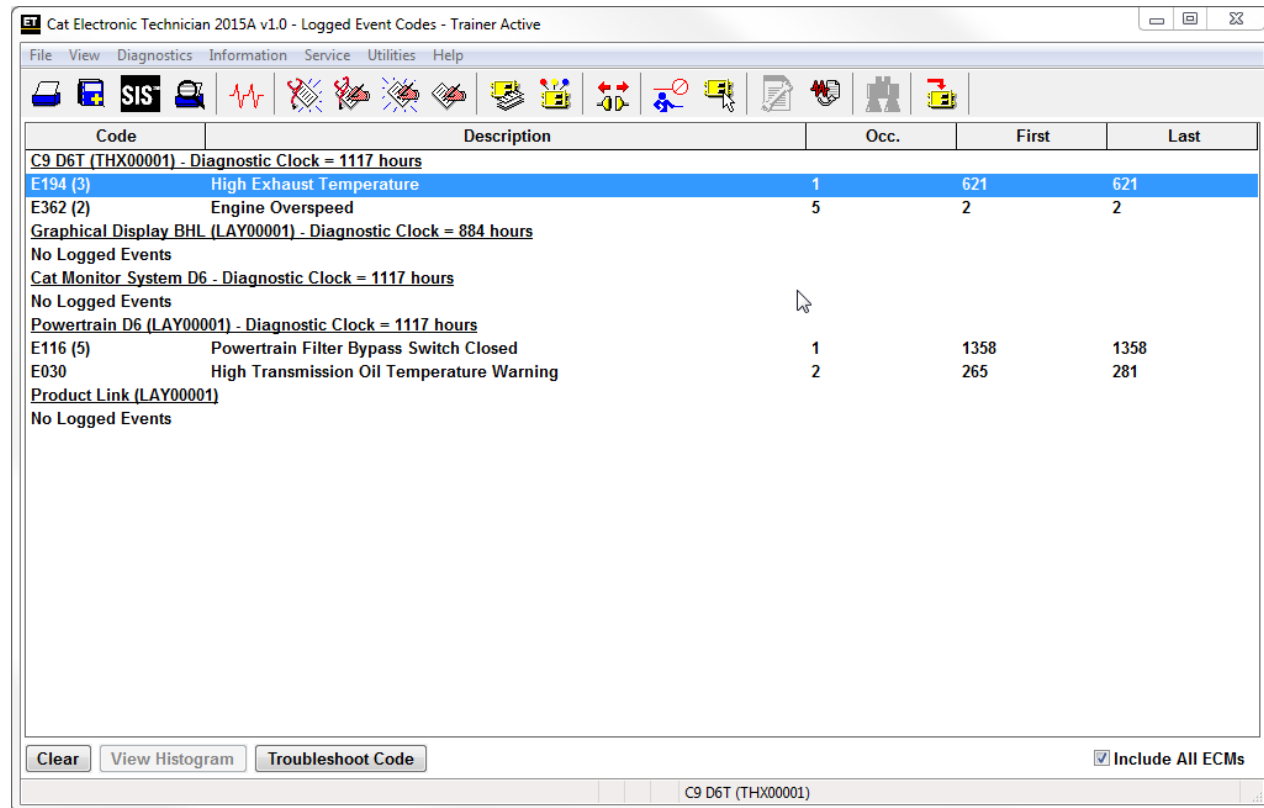
BUILT FOR IT.



CAT

Logged Event Codes

- The Logged Event Codes function provides a list of event codes logged by the ECM
- These codes are similar to the logged diagnostic codes, except that the event represents the symptom of the operational problem
- These codes indicate to the manager or technician how the machine/equipment is being operated



Code	Description	Occ.	First	Last
<u>C9 D6T (THX00001) - Diagnostic Clock = 1117 hours</u>				
E194 (3)	High Exhaust Temperature	1	621	621
E362 (2)	Engine Overspeed	5	2	2
<u>Graphical Display BHL (LAY00001) - Diagnostic Clock = 884 hours</u>				
No Logged Events				
<u>Cat Monitor System D6 - Diagnostic Clock = 1117 hours</u>				
No Logged Events				
<u>Powertrain D6 (LAY00001) - Diagnostic Clock = 1117 hours</u>				
E116 (5)	Powertrain Filter Bypass Switch Closed	1	1358	1358
E030	High Transmission Oil Temperature Warning	2	265	281
<u>Product Link (LAY00001)</u>				
No Logged Events				

Clear View Histogram Troubleshoot Code

☒ Include All ECMs

C9 D6T (THX00001)

BUILT FOR IT.



CAT

ECM Summary



- The ECM Summary screen allows user to view all of the useful ECM information
- All available ECMs are retrieved and their information displayed on the screen
- When reporting problems or are requesting help for the service tool, you need to give the information that is displayed on the ECM Summary screen

Cat Electronic Technician 2015A v1.0 - ECM Summary - Trainer Active

File View Diagnostics Information Service Utilities Help

Available ECM(s)

- C9 D6T (THX00001)
- Graphical Display BHL (LAY00001)
- Cat Monitor System D6
- Powertrain D6 (LAY00001)
- Shift Lever
- Product Link (LAY00001)

Description	Value
C9 D6T (THX00001)	
Equipment ID	LAY0000151
Engine Serial Number	THX00001
ECM Serial Number	00000001JL
Personality Module Part Number	3111901-00
Personality Module Release Date	MAR07
Personality Module Description	TTT-D6T
Graphical Display BHL (LAY00001)	
Product ID	LAY00001
ECM Serial Number	0000B001HX
Software Group Part Number	3026388-00
Software Group Release Date	DEC06
Software Group Description	AccuGrade System
Cat Monitor System D6	
ECM Part Number	2524501-01
Software Group Part Number	3231271-00
Software Group Release Date	DEC07
Mon Sys Harness Code	42
Powertrain D6 (LAY00001)	
Product ID	LAY00001
Equipment ID	LAY0000151
ECM Part Number	2621408-01
ECM Serial Number	00000001JT
Software Group Part Number	3339326-00
Software Group Release Date	AUG2008

Active Codes [4] Active Events [3] Status Flags [0]


C9 D6T (THX00001)


BUILT FOR IT.

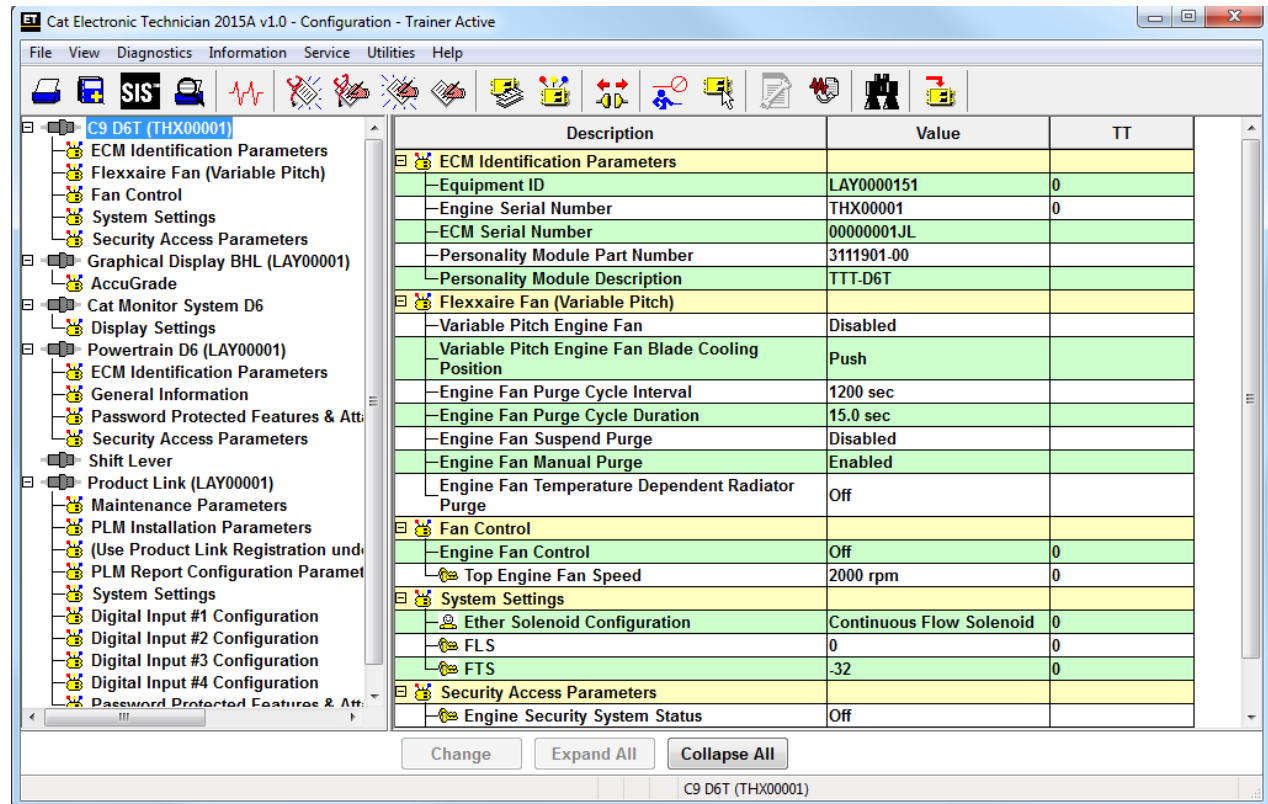


CAT

Configuration

-  The Configuration function allows user to view and change configurable information on an ECM. All available ECMs are retrieved and their information displayed on the screen

-  The Find function allows the user to search for a parameter or any word in a parameter (for example speed) in the Configuration screen

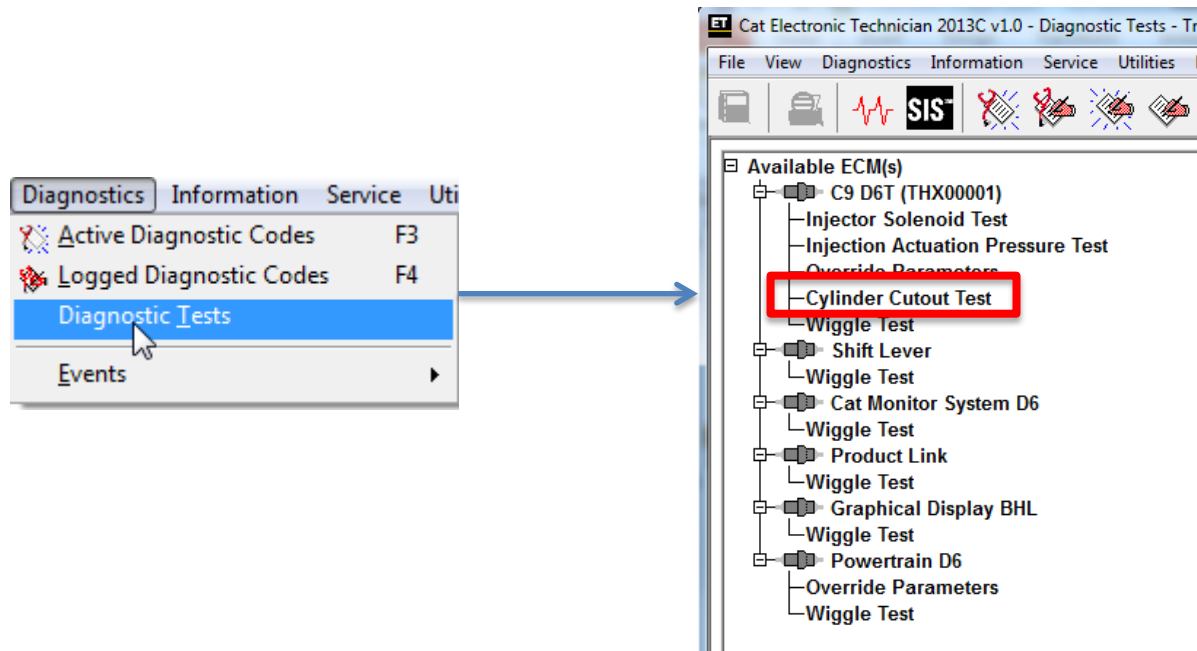


BUILT FOR IT.



Automatic Cylinder Cutout Test

Select Diagnostic Tests from the Diagnostic menu, then choose Cylinder Cutout test from the next screen



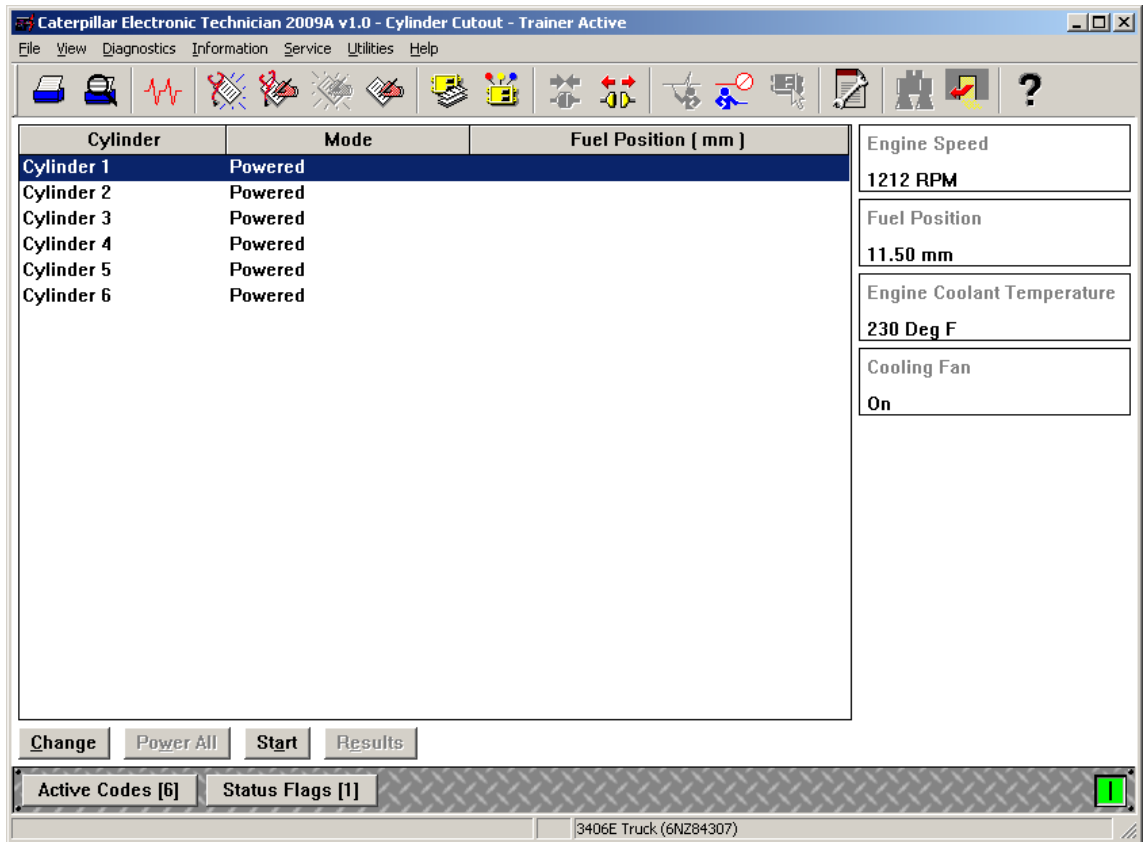
BUILT FOR IT.



CAT

Automatic Cylinder Cutout Test

- The Cylinder Cutout function allows user to perform an automated one, four, or five cylinder cutout test to verify that the injectors are working
- This process involves cutting out and re-powering a particular cylinder. It also monitors the other cylinders to see if their fuel position increases, as it should
- If the fuel position does not increase, then the cut out cylinder was not working before cutting it out.
- *Note: Not all automated tests are available for all products.*



BUILT FOR IT.



CAT

Automatic Cylinder Cutout Test

Select the
Cutout test that
needs to be
performed and
click continue

The screenshot shows the Caterpillar Electronic Technician 2009A v1.0 - Cylinder Cutout - Trainer Active software interface. The window has a menu bar (File, View, Diagnostics, Information, Service, Utilities, Help) and a toolbar with various icons. The main area is titled "Select Cylinder Cutout Test" and contains two radio button options:

- ☒ 4 - Cylinder Cutout Test (default)
(primary test for troubleshooting)
- ☐ 1 - Cylinder Cutout Test
(used when diagnosing a rough running engine)

Below the options, a text prompt reads: "Click the Continue button to proceed with the test." At the bottom of the main area are two buttons: "<< Back" and "Continue >>".

On the right side of the window, there is a panel displaying engine data:

- Engine Speed: 1212 RPM
- Fuel Position: 11.50 mm
- Engine Coolant Temperature: 230 Deg F
- Cooling Fan: On

At the bottom of the window, there is a status bar with two buttons: "Active Codes [6]" and "Status Flags [1]". On the far right of the status bar, there is a green indicator light icon.

The bottom of the window shows the vehicle information: "3406E Truck (6NZ84307)".

BUILT FOR IT.



CAT

Automatic Cylinder Cutout Test

- The test proceeds to display a list of test conditions. These conditions must be met before and during the automatic cylinder cutout test
- Cat ET will not allow the test to be run if the test conditions are not met or maintained
- *Note: Test conditions may vary for each test*

Caterpillar Electronic Technician 2009A v1.0 - 4 Cylinder Cutout - Trainer Active

File View Diagnostics Information Service Utilities Help

4 Cylinder Cutout Test Conditions
The following conditions must be met for the automatic Cylinder Cutout Test:

- 1) Engine Speed must be between 980 RPM and 1020 RPM
- 2) Engine Coolant Temperature must be 149 Deg F or higher
- 3) No engine performance related active diagnostic codes are allowed

If at any time any of these conditions are not met, the test will automatically be aborted.

Note: Fan cycling on and off, or engine load change, will invalidate this test.
1) If the fan is not controlled by the engine ECM, please enable the fan if possible.
WARNING: Please make sure the compression brake is in the off position. During the test the compression brake operating will make the engine surge.

Click the Continue button to begin test.

<< Back Continue >>

Active Codes [6] Status Flags [1]

3406E Truck (6NZ84307)

Engine Speed	1212 RPM
Fuel Position	11.50 mm
Engine Coolant Temperature	230 Deg F
Cooling Fan	On

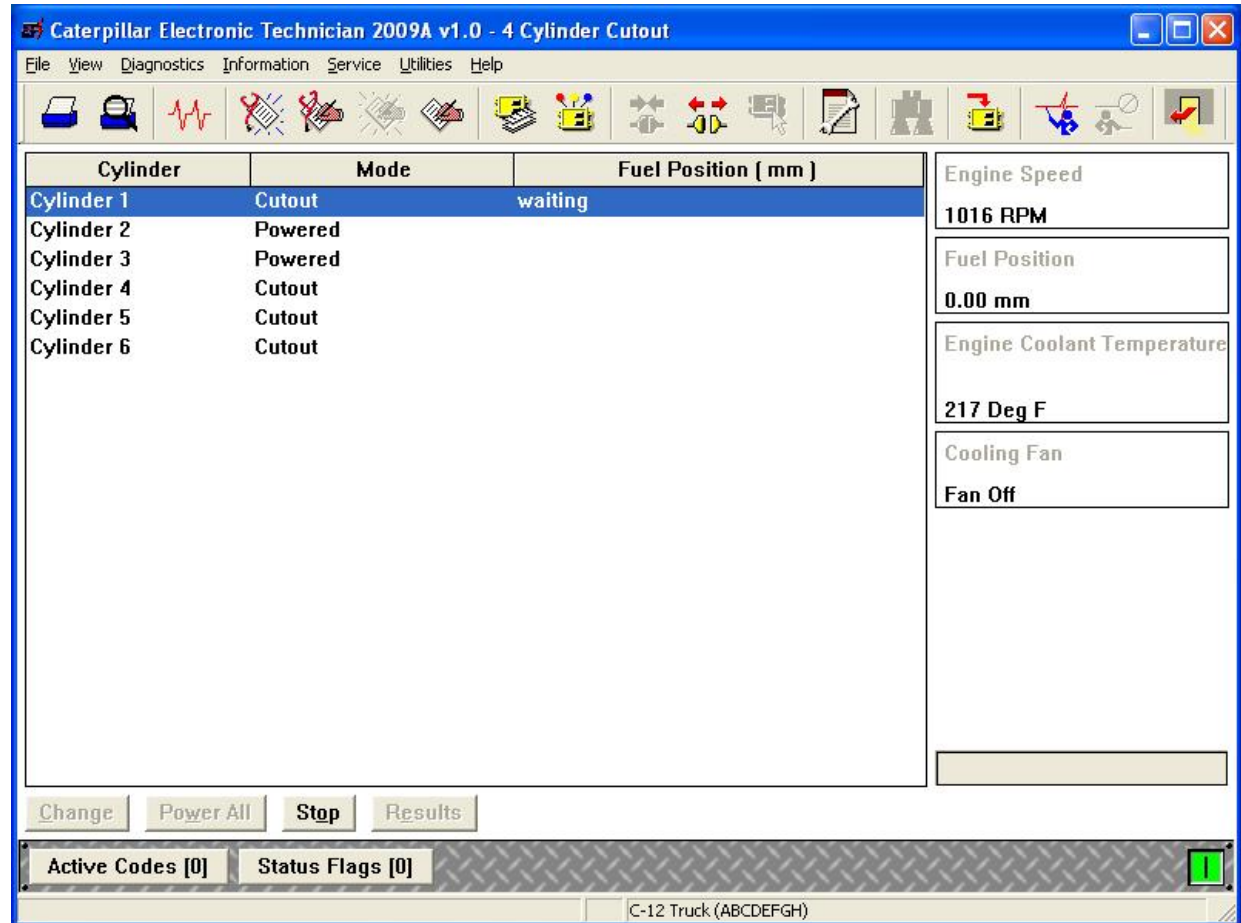
BUILT FOR IT.



CAT

Automatic Cylinder Cutout Test

- This screen is the automatic Cylinder Cutout test in progress
- Also present in this automated test is a progress indicator bar that represents the percent completion of the test
- In addition to the progress bar, Cat ET status bar indicates the current test number and current cylinder being tested

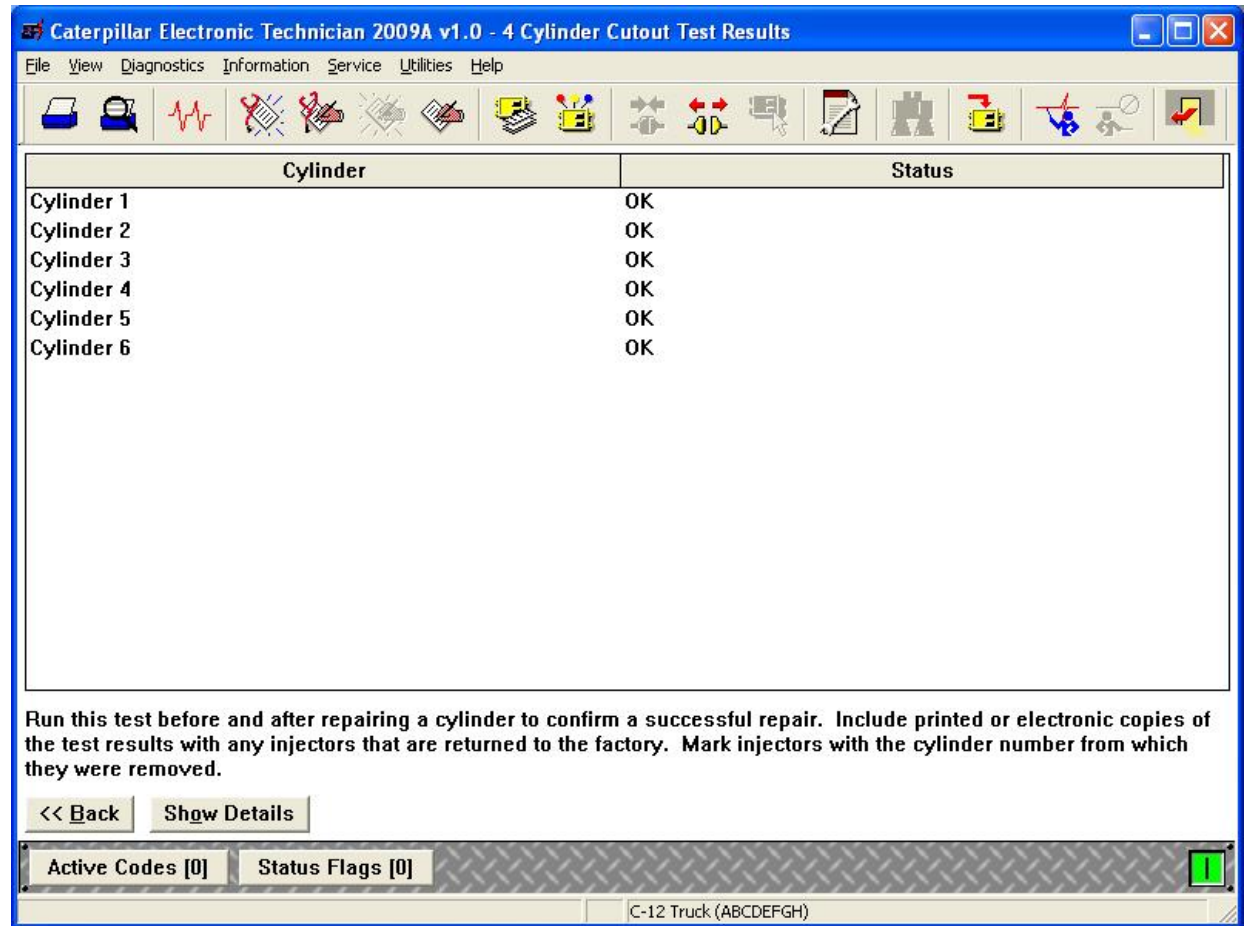


BUILT FOR IT.



Automatic Cylinder Cutout Test

- Upon completion of the cylinder cutout test, a results screen will appear letting the user know the injector's status and the results of the test
- The user can also view more specific and detailed test results from this screen by selecting the 'Show Details' push-button



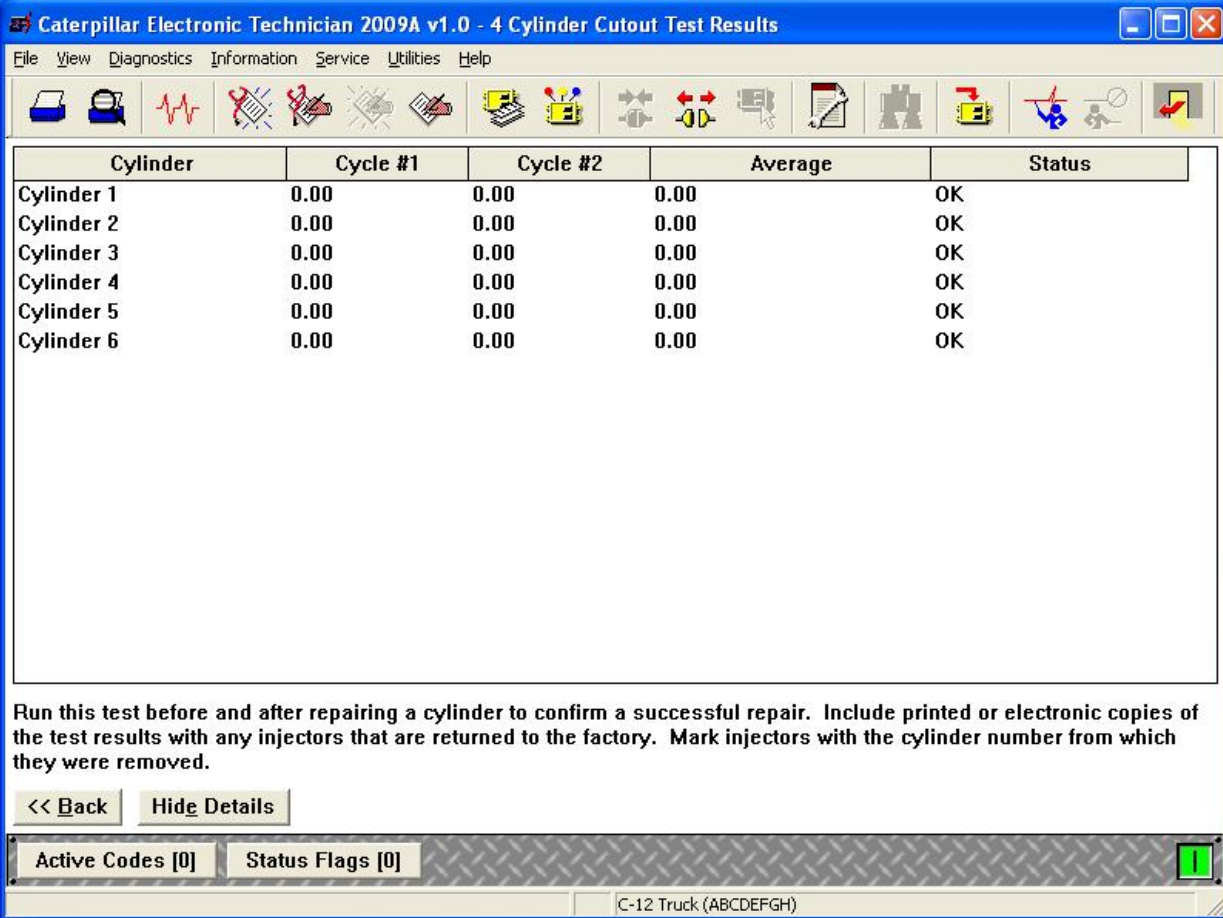
BUILT FOR IT.



CAT

Automatic Cylinder Cutout Test

Selecting the 'Show Details' push-button displays the cylinder cutout test sheet in electronic form.



Caterpillar Electronic Technician 2009A v1.0 - 4 Cylinder Cutout Test Results

File View Diagnostics Information Service Utilities Help

Cylinder	Cycle #1	Cycle #2	Average	Status
Cylinder 1	0.00	0.00	0.00	OK
Cylinder 2	0.00	0.00	0.00	OK
Cylinder 3	0.00	0.00	0.00	OK
Cylinder 4	0.00	0.00	0.00	OK
Cylinder 5	0.00	0.00	0.00	OK
Cylinder 6	0.00	0.00	0.00	OK

Run this test before and after repairing a cylinder to confirm a successful repair. Include printed or electronic copies of the test results with any injectors that are returned to the factory. Mark injectors with the cylinder number from which they were removed.

<< Back Hide Details

Active Codes [0] Status Flags [0]

C-12 Truck (ABCDEFGH)

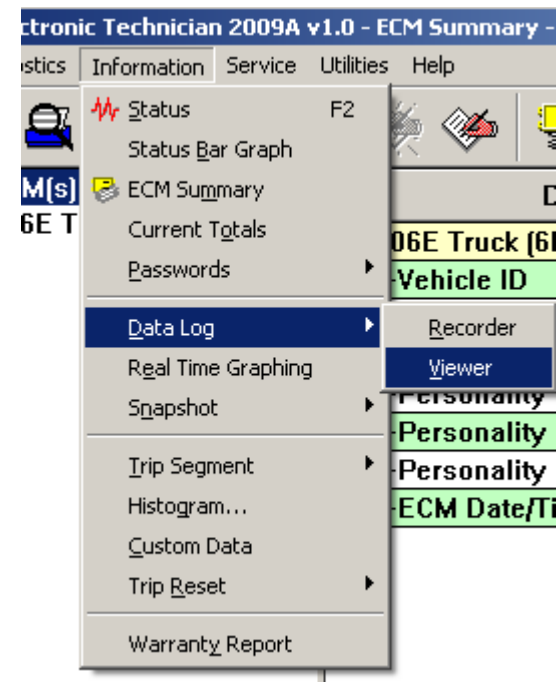
BUILT FOR IT.



CAT

Cat ET Data Logger

- Data Logger:
 - Is available for all Cat ET applications.
 - Allows you to record real time data (as it occurs) of parameters you have selected from the ECM.
- To use Data Logger:
- Select Data Logger from the Information menu.



BUILT FOR IT.

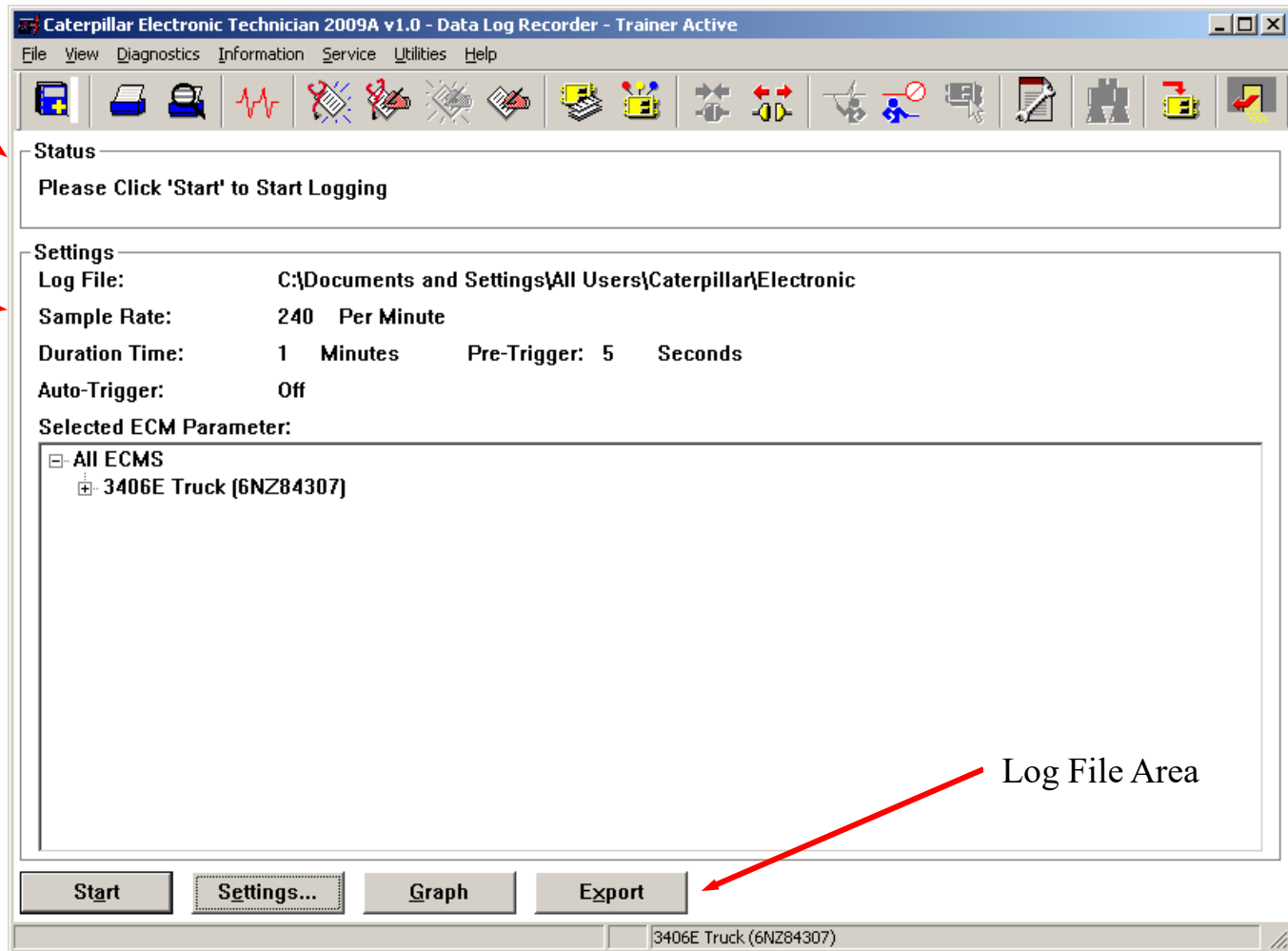


Cat ET Data Logger

The Data Logger screen displays

Status Area

Setup Area



Log File Area

BUILT FOR IT.



CAT

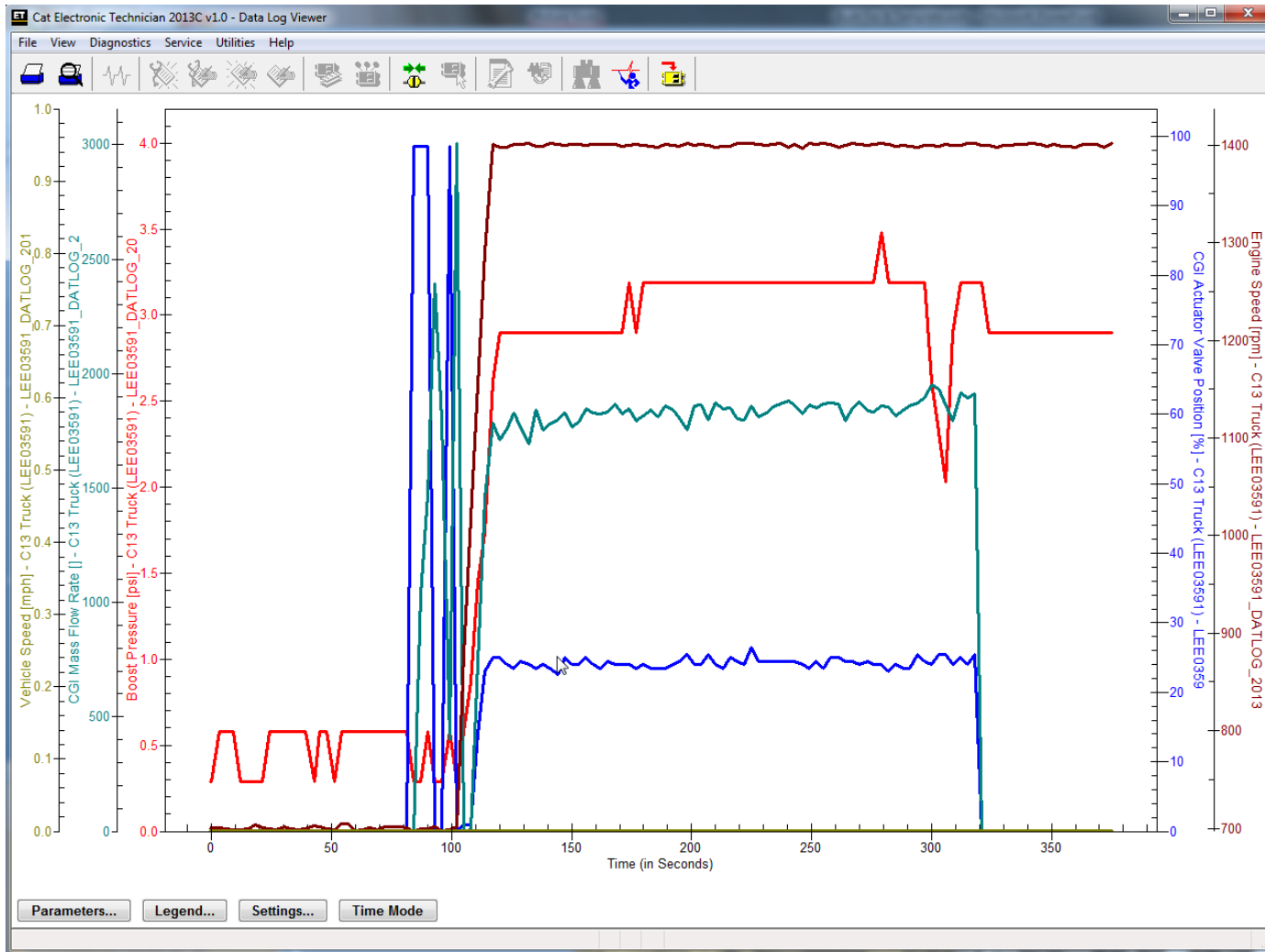
Cat ET Data Logger

- The range that data can be collected is from four samples per second down to five an hour
- When the logging is complete, Cat ET will automatically shut down the data logging function
- Data logging takes place within Cat ET, so the program needs to be running at all times during the logging process
- Data Logger will work in the background, making it possible for other functions of Cat ET to be used
 - However, if a rate faster than 20 samples per minute is chosen, a dialog will appear preventing the user from leaving the 'Data Logger' tool until logging is complete or the 'Stop Log' push-button is selected

BUILT FOR IT.



Cat ET Data Log Viewer



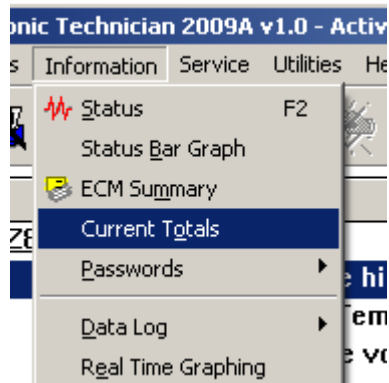
BUILT FOR IT.



CAT

Current Totals

- From the Information dropdown select Current Totals



A screenshot of the 'Caterpillar Electronic Technician 2009A v1.0 - Current Totals - Trainer Active' window. The window displays a table with three columns: Description, Value, and Unit. The table lists various operational metrics and their current values. Below the table is a 'Change' button. The status bar at the bottom indicates '3406E Truck (6N284307)'.

Description	Value	Unit
Total Time	5:00	hours
Total PTO Time	9:00	hours
Total Idle Time	4:00	hours
Total Distance	28354	Miles
Total Fuel	121	Gal
Total PTO Fuel	5	Gal
Total Idle Fuel	2	Gal
Total Max Fuel	158	Gal
Average Load Factor	76	%

Change

3406E Truck (6N284307)

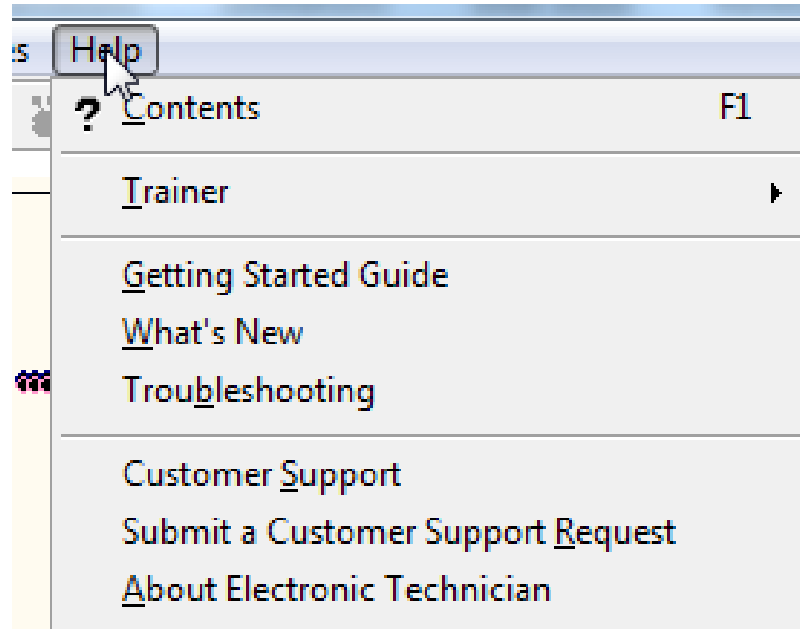
BUILT FOR IT.



CAT

Troubleshooting Guide

- From the help dropdown menu, select Troubleshooting
- This is for troubleshooting Cat ET, not equipment issues

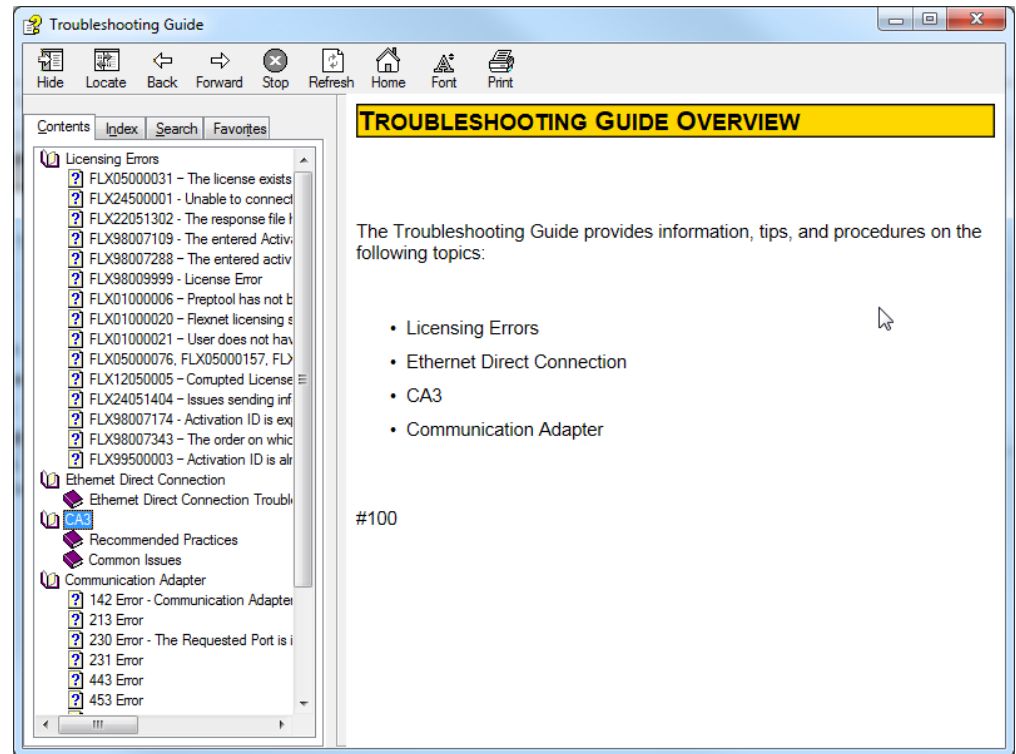


BUILT FOR IT.



Troubleshooting Guide

- Displays most common issues associated with Cat ET
- Opens in a separate window
- Clicking on related error takes you to troubleshooting steps to fix the problem



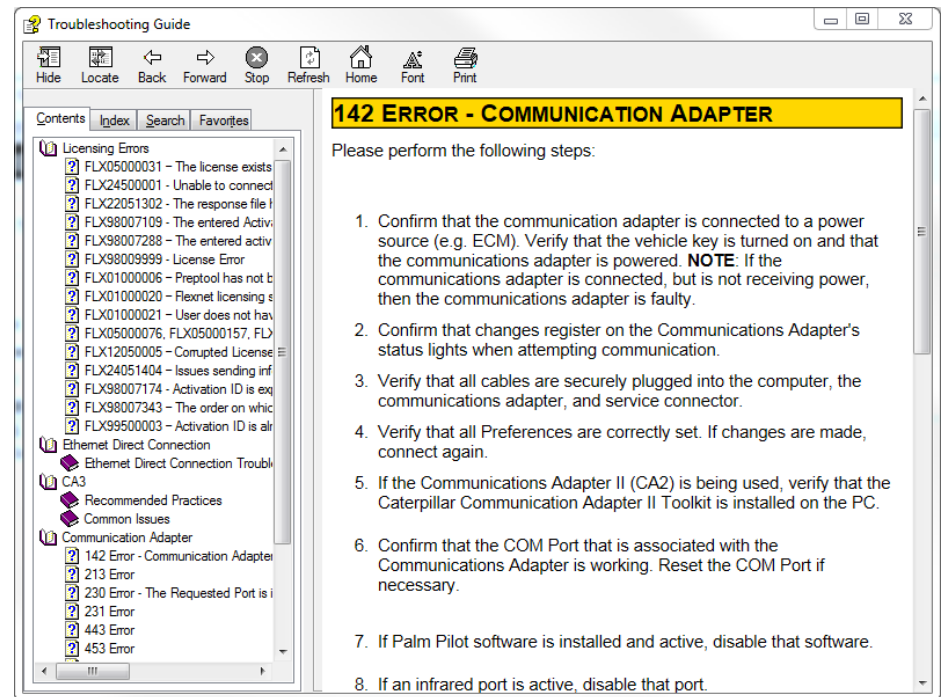
BUILT FOR IT.



CAT

Troubleshooting Guide

- The procedures in the Troubleshooting Guide are identical to the procedures utilized by the support center when you call in for assistance



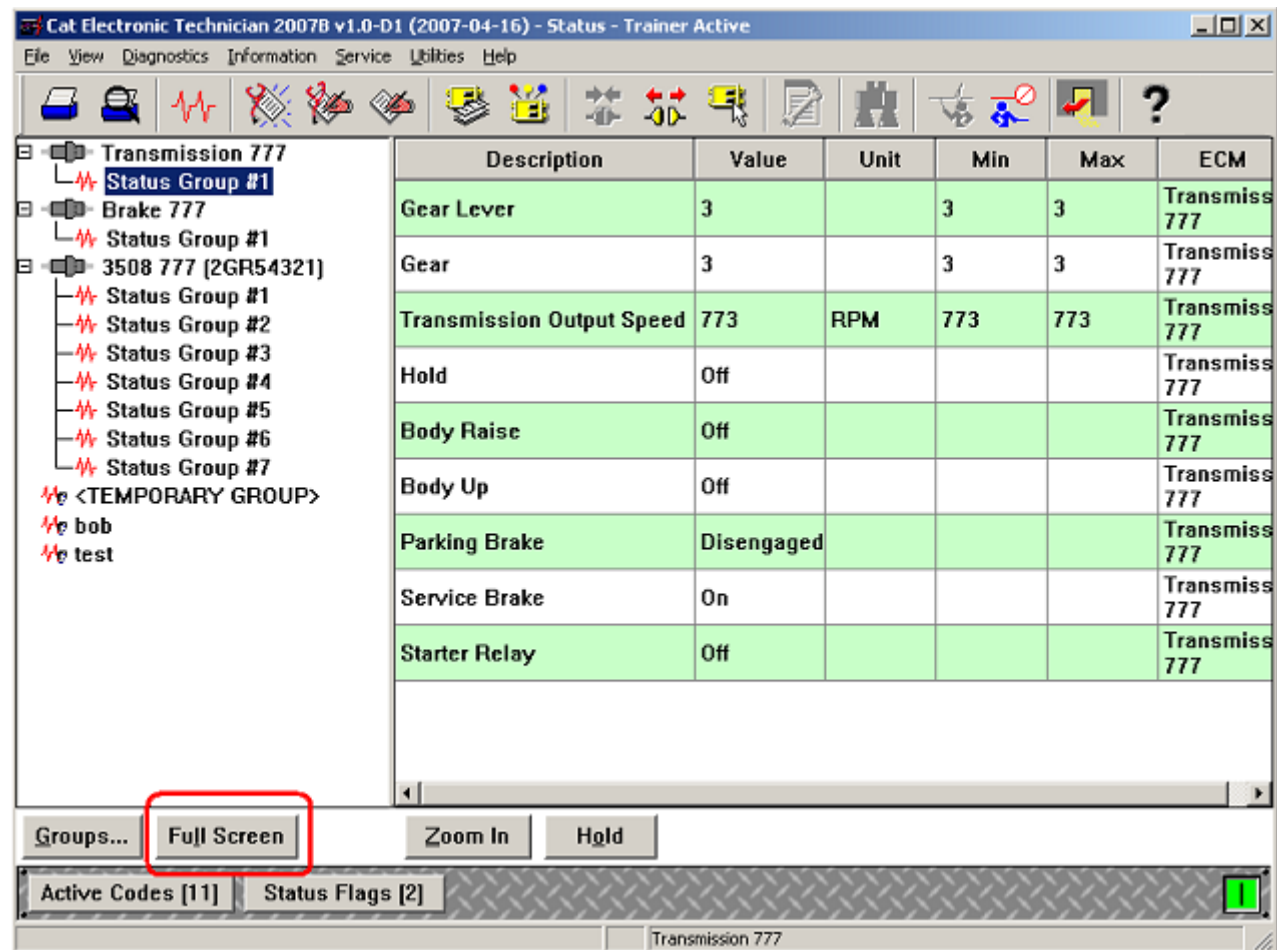
BUILT FOR IT.



CAT

Full Screen Status

- Enables User to view screen from a distance
 - Access from Status Screen
 - Choose up to six parameters to view
 - Select Full Screen from the Status page



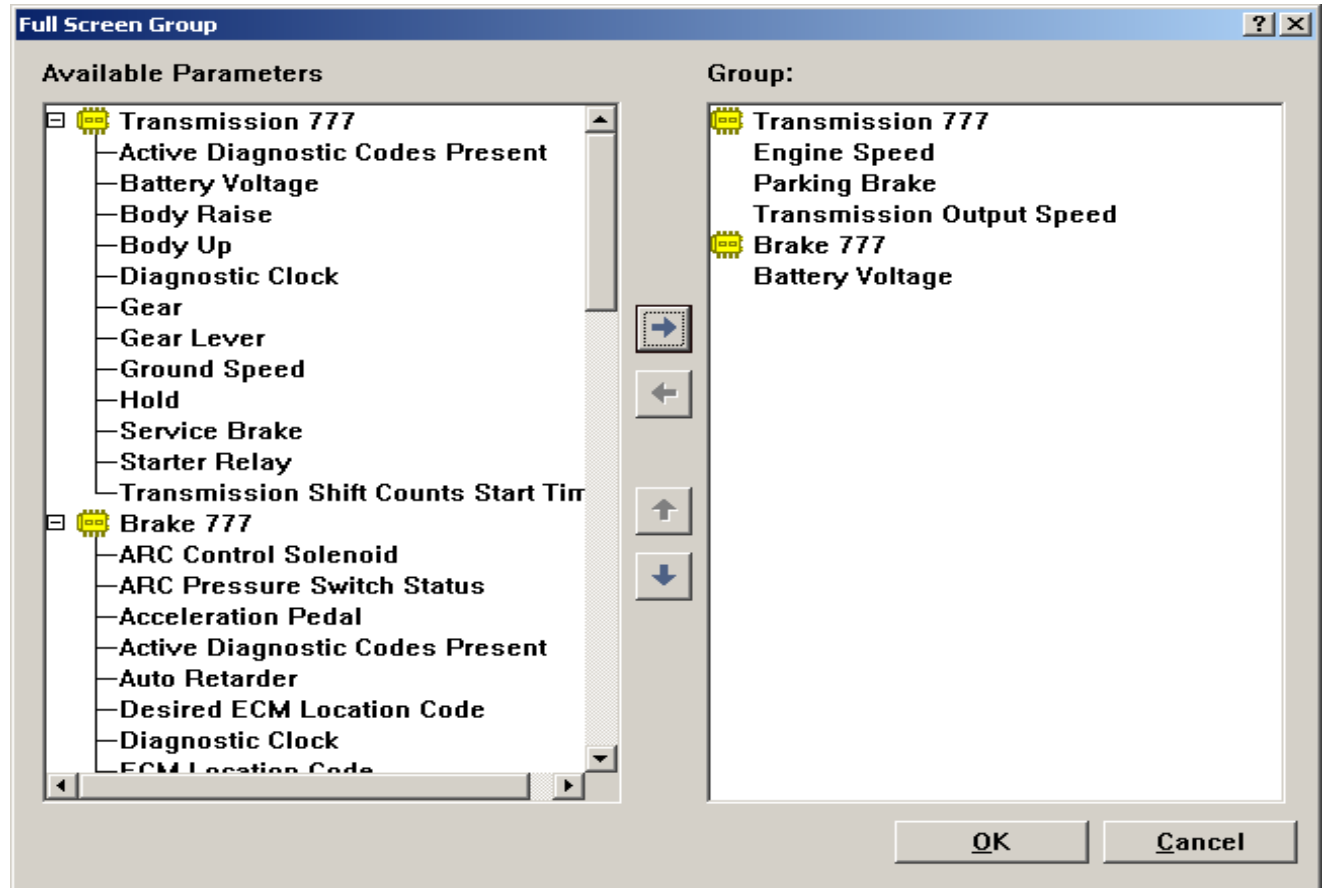
BUILT FOR IT.



CAT

Full Screen Status

- Select the parameters you would like to monitor
- Remember, only six can be displayed at any given time
- Once Full Screen Status is displayed, any keystroke or mouse click will return to Cat ET

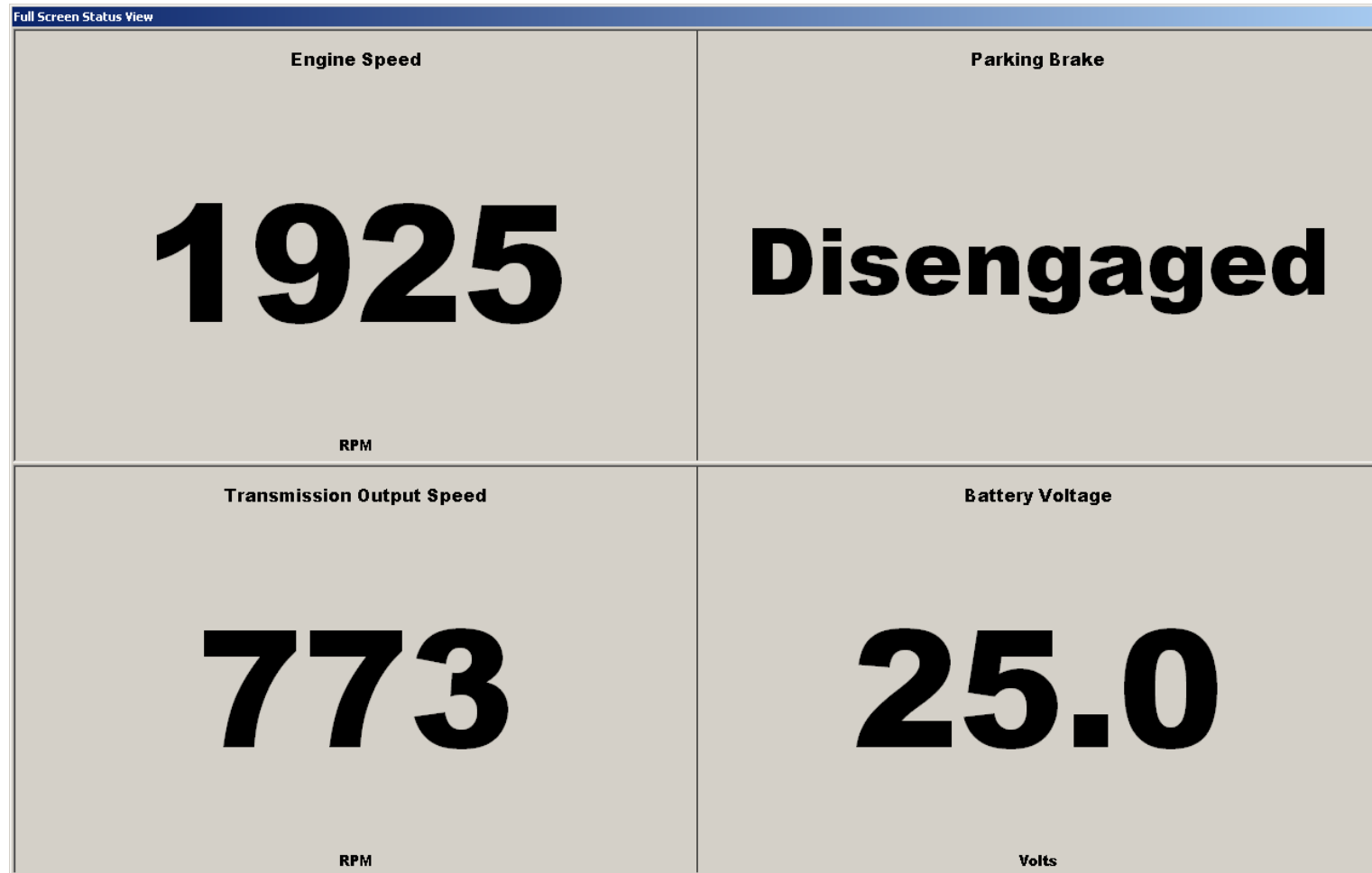


BUILT FOR IT.



CAT

Full Screen Status



BUILT FOR IT.



CAT

Questions?

- For any questions that you may have please contact your local Cat Dealer or.....
- Contact the Cat ET Support desk at:

eBusiness Enterprise Service Center Contact Information		
Email	Ebiz_Apps_Support@Cat.com	
Location	Phone Number	Languages: Hours Available (Time Zone)
US and Canada	(309) 578-6789 Toll-Free: (855) 391-1778	English: 24x7
Mexico	+52 8183 192847	Spanish: 11:00PM Sun – 11:00PM Fri (Central) English: 24x7
Brazil	+55 1921 061048	Brazilian Portuguese: 6:00AM – 10:00PM Mon-Sat (Brasilia) Spanish: 11:00PM Sun – 11:00PM Fri (Central) English: 24x7
UK	+44 19210 61402	English: 24x7 French: 11:00PM Sun – 11:00PM Fri (Central European) German: 7:30AM – 4:00PM Mon-Fri (Central European) Italian: 9:00AM – 5:00PM Mon-Fri (Central European)
Belgium	+32 7125 1603	French: 11:00PM Sun – 11:00PM Fri (Central European) German: 7:30AM – 4:00PM Mon-Fri (Central European) English: 24x7
Germany	+49 4023 803025	German: 7:30AM – 4:00PM Mon-Fri (Central European) English: 24x7
Italy	+39 0248 422626	Italian: 9:00AM – 5:00PM Mon-Fri (Central European) English: 24x7
Spain	+34 954 418708	Spanish: 11:00PM Sun – 11:00PM Fri (Central US) Brazilian Portuguese: 6:00AM – 10:00PM Mon-Sat (Brasilia) English: 24x7
China	+86 2258 096140	English: 24x7 Mandarin: 8:00AM – 5:00PM Mon-Fri (Chinese Standard)
Australia	+61 7332 98277	
Singapore	+65 6801 2237	
Thailand	+66 2105 5197	
Indonesia	+62 2182 39805	
Bangalore	+91 80 3350 3940	
Chennai	+91 44 3999 2165	

BUILT FOR IT.

