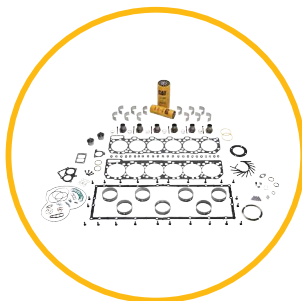


# HEAVY-DUTY OVERHAUL KITS

HEAVY-DUTY PRECIOUS METALS OVERHAUL KITS GIVE YOU COST-EFFECTIVE, HIGH-QUALITY OVERHAUL OPTIONS THAT HELP YOU GET THE MOST OUT OF YOUR CAT® ENGINE. EACH KIT MEETS CATERPILLAR'S RECOMMENDED ENGINE OVERHAUL PRACTICES.

## FOUR LEVELS FOR EVERY SITUATION OR BUDGET



### BRONZE

- » Low-cost repair option
- » Includes value-add components such as Cat® oil and fuel filters
- » Includes components that you might not think of replacing such as exhaust sleeves and exhaust manifold studs
- » No core charge



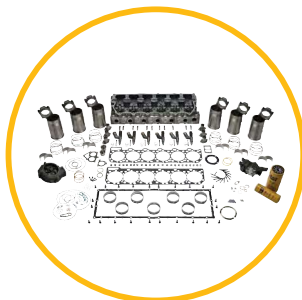
### SILVER

- » A basic in-frame overhaul (comparable to most will-fit in-frame overhaul kits)
- » Builds on the Bronze kit
- » No core charge



### GOLD

- » A basic in-frame overhaul
- » Includes the core parts from the Bronze kit and the added bonus of Cat Reman cylinder pack assemblies (which are beneficial because the rods, pistons, rings and liners come preassembled, saving four to six hours of labor compared with the Silver kit)



### PLATINUM

- » Includes the components from the Gold kit, plus Cat Reman cylinder head assembly and cylinder head bolt set, Cat Reman fuel injector, Cat Reman water pump and Cat Reman oil pump
- » Optimizes performance and fuel economy
- » Maximizes the built-in second or third life of your engine



# BE COST-EFFECTIVE WITHOUT COMPROMISING

FIND THE REPAIR OPTIONS THAT BEST FIT YOUR BUDGET.

Sales Model	Engine S/N	Horsepower Range	Bronze	Silver	Gold	Platinum			
<b>C-12</b>	2KS00387 - UP	335 - 455 hp	350-5791	350-5735	10R-9808	10R-9810			
	MBL00001 - UP	335 - 455 hp		352-6018	10R-9809	10R-9811			
<b>C13 ACERT™</b>	KCB00001-05433	380 hp	422-9391	422-9598	10R-9920	10R-9921			
		430 hp							
	KCB00001-06811	335 hp							
		410 hp							
	KCB05434 - UP	380 hp							
		430 hp							
	KCB06812 - UP	335 hp							
		410 hp							
	LEE00001-UP	305 hp				438-7105	438-8632	20R-1166	20R-1167
		335 hp							
		350 hp							
		370 hp							
		380 hp							
		410 hp							
430 hp									
470 hp									
<b>3406E</b>	5EK00001 - UP	500 - 550 hp	348-7073	348-7339	10R-9552	20R-7815			
	6TS00001-25054								
	5EK67193 - UP	475 hp*		348-7346	10R-9554	20R-7816			
	6TS00001-25054	475 hp*							
	5EK00001-67192	475 hp*		348-7339	10R-9552	20R-7817			
	5EK53004 - UP	435 - 455 hp*							
	6TS00001-25054	455 hp*		348-7346	10R-9554	20R-7818			
	5EK00001-53003	435 hp*							
	5EK01185-53003	435 hp*		349-5917	10R-9553	20R-7819			
	5EK00001 - UP	355 - 410 hp							
6TS00001-25054	310 - 330 hp	N/A	N/A	N/A					
6TS25055 - UP	475 - 550 hp								
<b>C-15</b>	6NZ00001 - UP	435 - 550 hp	345-7562	346-4200 <sup>△</sup>	10R-9343 <sup>△</sup>	20R-7822			
		9NZ00001 - UP					435 - 550 hp	346-4170	10R-9345
	MBN00001 - UP	435 - 525 hp		346-3791 <sup>△</sup>	10R-9346 <sup>△</sup>	20R-7825			
		435 - 550 hp					20R-0740 <sup>△△</sup>	20R-7826	
<b>C15 ACERT</b>	BXS00001 - UP	435 - 550 hp	357-4645	356-1428 <sup>△</sup>	10R-9923 <sup>△</sup>	20R-7411			
	MXS00001 - UP	435 - 550 hp					356-1448 <sup>△</sup>	10R-9924 <sup>△</sup>	20R-7412
	NXS00001 - UP	435 - 550 hp		442-8972	20R-3076	20R-7414			
	MXS00001 - UP	600 - 625 hp							
	NXS00001 - UP	600 - 625 hp							
	SDP00001-UP	435 hp	442-7439	442-8972	20R-3076	20R-7414			
		475 hp							
500 hp									
550 hp									
SDP00001 - UP	600 hp	442-7439	N/A	N/A	N/A				
<b>C-16</b>	7CZ00001 - UP	575 - 600 hp	345-7562	346-4307	10R-9344	20R-7824			

Kits are available on  
**Parts.Cat.com**  
for fast online ordering

\* Difference in pistons; confirm piston part number compatibility with dealer when ordering the Silver, Gold or Platinum Kits.

<sup>△</sup> Kit ships with cylinder packs for normal load applications. High load applications (GVWR greater than 140,000 lbs.) should utilize high load kit or replace top ring with 247-6130. Refer to SEBD6832 for top ring reference.

<sup>△△</sup> High load application kit (GVWR greater than 140,000 lbs.).